



South-West View



Saffron

Saffron is located at Shivaji Park in a quiet neighborhood in Dadar West, away from noise and crowds. Our Vastu-compliant design maximizes daylight and ventilation. We constantly use new and high-quality building materials, innovative to the construction industry to reduce our carbon footprint. Our main features include illuminated common areas, rainwater harvesting, state-of-the-art elevators, trending fittings and spacious house plans.

Our strengths are to complete all projects with all permissions and hand over peaceful possession to our esteemed clients.



West View



Saffron

Saffron, Plot No. 146, Dr. M.B. Raut Road, Shivaji Park, Dadar(W), Mumbai- 400028.



 Train
 Metro



Walking Distance

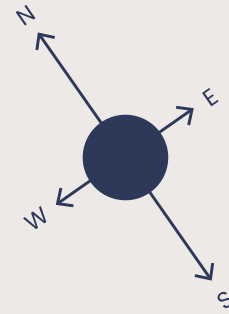
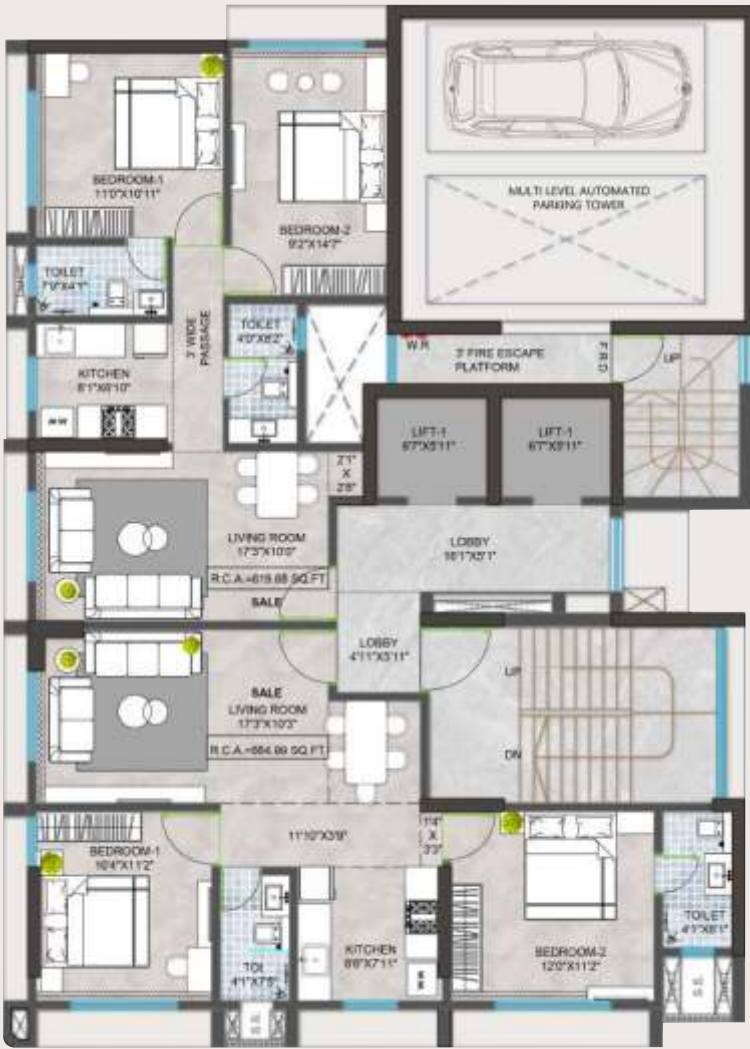
Dadar Station	• • • • •	13 min
Dadar Metro Station	• • • • •	10 min
Matunga Road Station	• • • • •	15 min
Sitladevi Metro Station	• • • • •	13 min
Sitladevi Temple	• • • • •	10 min
Victoria Church	• • • • •	13 min
Bombay Scottish School	• • • • •	10 min
Balmohan Vidyamandir	• • • • •	8 min
Beach	• • • • •	2 min
Narali Baug	• • • • •	10 min
Citylight Cinema	• • • • •	6 min
Starcity Theatre	• • • • •	7 min
Kohinoor Square	• • • • •	10 min
MGM Swimming Pool	• • • • •	6 min

2 BHK

Floor Plan

Typical

(2 BHK+ 2 BHK)



3 BHK

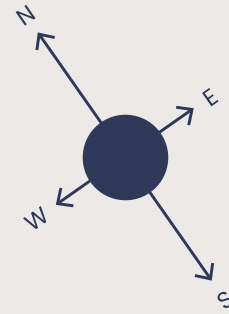
Floor Plan

Typical

Note : Areas mentioned in plans are to be measured from walls in unfinished condition i.e. without plaster & claddings

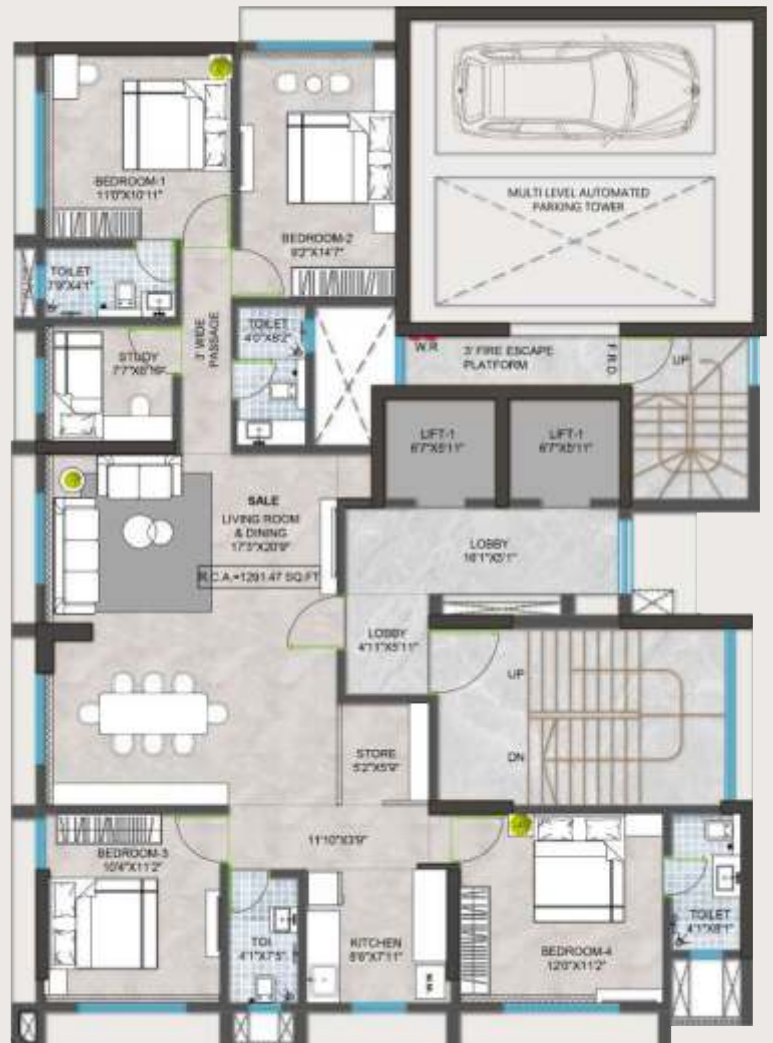
Luxurious 3 BHK

Floor Plan
Conceptual



Luxurious 4 BHK

Floor Plan
Conceptual



Note : Areas mentioned in plans are to be measured from walls in unfinished condition i.e. without plaster & claddings

Buildarch is a real estate development and redevelopment company which creates quality rehabilitation and housing.

Godshalwar Project Consultants & Developers (GP) is a property development firm which specializes in redevelopment projects in Mumbai.



Two Elevators



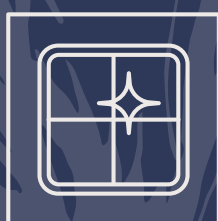
Double Height
Entrance Lobby



CCTV Security



Sufficient
Parking



Aluminum
Windows



Beautiful Elevation

1200+

Happy Families

65+

Years of Experience

7 Lakh+

Lakh Sq Ft in
Prime Locations

60+

Developments and
Redevelopment Projects



Saffron, Plot No. 146,
Dr. M.B. Raut Road,
Shivaji Park, Dadar(W),
Mumbai - 400028.

Buildarch Land Developers Pvt. Limited

 Sales: +91 - 9819011115

 022 - 24445010 / 24445011

 sales@buildarch.biz

 buildarch.biz

Address:

101 Sankalp, S.H. Paralkar Marg,
Shivaji Park, Dadar (West),
Mumbai - 400028

Godshalwar Project Consultants & Developers

 Sales: +91 - 9870839081

 022 - 24473000/24473001

 gpdevelopers.co.in

Address:

001, Shree Apartments, Gr. Floor,
Dr. M. B. Raut road, Shivaji Park,
Dadar (West), Mumbai - 400028



MahaRERA Regn. No.:
P51900080719



Note:

The information, images, visuals, drawings, plans, sketches, specifications and amenities shown in this brochure are an architect's impression and are only indicative of the envisaged redevelopment; the same are subject to approvals from the planning authorities. The Developer / Promoter reserves right to make amendments therein as and when it deems fit and proper.